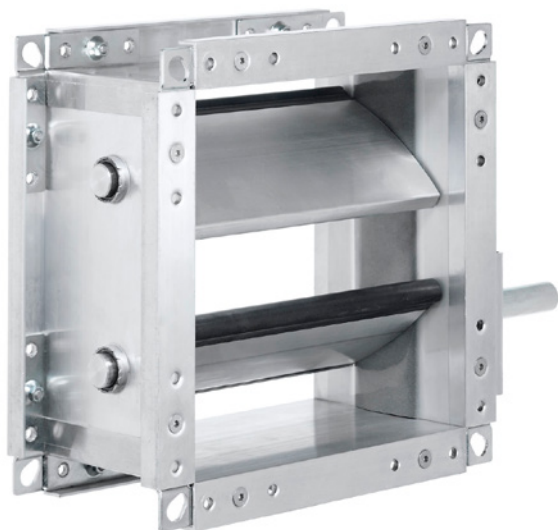


Description

REGLAIR Control Damper made of **stainless steel** 1.4301 or 1.4571 in **standard design**. Typ -15..



Highend
air handling
components



Control damper made of **stainless steel** 1.4301 or 1.4571 in **standard design**.

Leakage rate: 150 m³/hm² at 100 Pa pressure difference.

Housing made of stainless steel C-profile sections bolted to corners by corner brackets with no welds of any kind to fit all customary duct connections.

Connecting flange 25, 36 or 50mm, housing depth 165mm.

Torsionally rigid hollow section louvres made of 150mm stainless steel with large size replaceable EPDM seal, resistant to temperatures up to 120°C.

Damper spindles made of stainless steel, drive spindles made of stainless steel, pressed into core reinforcement of louver profiles and supported at both ends in **plain bearings** made of oil-soaked sintered bronze. Shaft diameter 18mm.

Louvre position on driven spindle visible from outside. Drive spindle provided with additional support bearing. With integrated stop system for both end positions and OPEN/CLOSED labels.

Standard clockwise damper closing direction.

Louvres interlinked with opposing movements. Individual louvres interconnected with outer stainless steel rods.

The damper can be installed in all positions. Closed louver arrangement must be **expressly** specified on ordering.

Options

- Leak-tight in seated position according to DIN 1946/4 = CEN 1751, Cl. 3 (leakage rate: 10 m³/hm² at 100 Pa)
- CEN 1751 Cl. 4 (10 m³/hm² at 300 Pa)
- Ultra leak-tight (4 m³/hm² at 300 Pa)
- Housing gas-tight to the outside.
- Temperature resistant up to 200°C (louvres with silicone seals).
- Temperature resistant up to 600°C (louvres in parallel with stainless steel seals and
- spindles fitted in stainless steel bearings, leak-tight to CEN 1751 Cl. 2.
- 4-sided internal insulation made of mineral fibre fitted in two frames and
- thermally separated.
- Louvres insulated on the inside.
- Leak-tightness tests.
- Materials certified to DIN 50049-3.1b.
- Earthquake analyses.
- Factory acceptance tests.
- With hand-wheel and locking mechanism.
- With electric or pneumatic drive.
- Equipped with motor drive for lift motors.